



In business since 1977, our expertise lies in the rental of heavy machinery (excavators, compactors, wheeled or tracked dumpers, and wheel loaders) of all sizes for all your project needs.



## PRICE LIST

Weekly and monthly rentals



## Contact us

520 Rivière Street, Cowansville  
J2K 3G6  
(450)266-5000  
vente@pinso.com  
www.pinso.com

## Excavators 1.7 tons SPECIFICATIONS

Width : 4.3'  
Digging Depth : 7.3'  
Loading Height : 8.4'  
Weight : 1,720 kg  
Engine Power : 15 HP



WEEKLY  
750\$

MONTHLY  
2250\$

## Excavators 3.5 to 4.5 tons SPECIFICATIONS

Width : 5.9'  
Digging Depth : 10.1'  
Loading Height : 11.4'  
Weight : 3,520 to 4,500 kg  
Engine Power : 23 HP



WEEKLY  
1050\$

MONTHLY  
3100\$

## Excavators 5 to 6.5 tons SPECIFICATIONS

Width: 6.8'  
Digging Depth: 11.7'  
Loading Height: 13.4'  
Weight: 4,790 to 5,920 kg  
Engine Power: 36 HP



WEEKLY  
1150\$

MONTHLY  
3350\$

## Excavators 8 tons SPECIFICATIONS

Width : 8.1'  
Digging Depth : 14.2'  
Loading Height : 17.1'  
Weight : 8,870 kg  
Engine Power : 57 HP

\*Reach limiter available on certain units



WEEKLY  
1350

MONTHLY  
4000\$

\*Most of our units come equipped with a hydraulic quick coupler, two buckets, and a thumb.

\*Weekly rental: up to 40 hours. Monthly rental: up to 176 hours. Please note that specifications may vary depending on the make and model.

## Excavators

### 11 tons

#### SPECIFICATIONS

Width : 6.6' to 8.75'  
Digging Depth : 16.4' to 18.33'  
Loading Height : 6.6' to 9.08'  
Weight : 12,000 kg  
Engine Power : 71 to 80 HP  
\*Reach limiter available on certain units



WEEKLY  
1600\$

MONTHLY  
4750\$

## Excavators

### 13 to 15 tons

#### SPECIFICATIONS

Width : 8.6'  
Digging Depth : 27.6' to 28.11'  
Loading Height : 9.5'  
Weight : 15,000 kg  
Engine Power : 96 to 105 HP  
\*Reach limiter available on certain units



WEEKLY  
1850\$

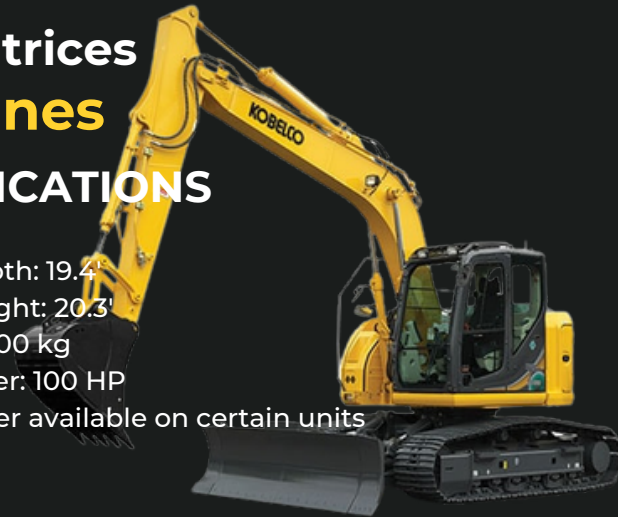
MONTHLY  
5500\$

## Excavatrices

### 16 tonnes

#### SPECIFICATIONS

Width: 8.1'  
Digging Depth: 19.4'  
Loading Height: 20.3'  
Weight: 14,700 kg  
Engine Power: 100 HP  
\*Reach limiter available on certain units



WEEKLY  
2200\$

MONTHLY  
6500\$

## Excavators

### 20 to 24 tons

#### SPECIFICATIONS

Width: 10.4'  
Digging Depth: 21.9'  
Loading Height: 23.4'  
Weight: 25,700 kg  
Engine Power: 159 HP  
\*Reach limiter available on certain units



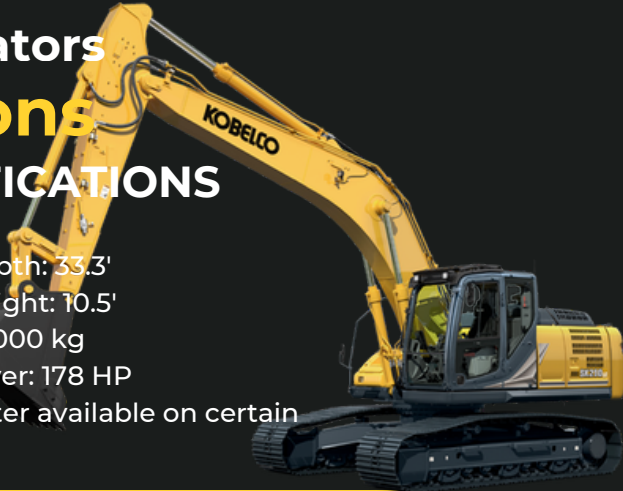
WEEKLY  
2400\$

MONTHLY  
7200\$

\*Most of our units are equipped with a hydraulic quick coupler, two buckets, and a thumb attachment.

## Excavators 26 tons SPECIFICATIONS

Width: 11.1'  
Digging Depth: 33.3'  
Loading Height: 10.5'  
Weight: 27,000 kg  
Engine Power: 178 HP  
\*Reach limiter available on certain units



WEEKLY  
2850\$

MONTHLY  
8500\$

## Excavators 35 tons SPECIFICATIONS

Width: 11.3'  
Digging Depth: 35.1'  
Loading Height: 11.9'  
Weight: 27,000 kg  
Engine Power: 265 HP  
\*Reach limiter available on certain units



WEEKLY  
5000\$

MONTHLY  
10000\$

Rental rates are calculated without fuel.  
Transportation is extra.  
Daily rental: maximum of 8 hours.  
Weekly rental: maximum of 40 hours.  
Monthly rental: maximum of 176 hours.  
Additional hours are charged on a prorated basis.

\*\*Lowest price displayed.

## Contact us

520 Rivière Street, Cowansville  
J2K 3G6  
(450)266-5000  
vente@pinso.com  
www.pinso.com

## Compactors

# 40"

### SPECIFICATIONS

Weight : 2,665 kg

Engine Power : 44 HP

\*Some units may be equipped with a cleaning system and/or a water system.



WEEKLY

850\$

MONTHLY

2500\$

## Compactors

# 54"

### SPECIFICATIONS

Weight : 5,889 kg

Engine Power : 74 HP

\*Some units may be equipped with a cleaning system and/or a water system.



CANOPY

WEEKLY

1000\$

MOIS

3000\$

CAB

WEEKLY

1150\$

MOIS

3350\$

## Compactors

# 66"

### SPECIFICATIONS

Weight : 7,300 kg

Engine Power : 75 HP

\*Some units may be equipped with a cleaning system and/or a water system.



WEEKLY

1250\$

MONTHLY

3750\$

## Compactors

# 84"

### SPÉCIFICATIONS

Weight : 10,600 to 13,600 kg

Engine Power : 113 to 137 HP

\*Some units may be equipped with a cleaning system and/or a water system.



CANOPY

WEEKLY

1600\$

MONTHLY

4750\$

CAB

WEEKLY

1750\$

MONTHLY

5250\$

## Wheels dumpers 3 tons

### SPECIFICATIONS

Engine Power : 46 HP  
Load Capacity : 3,000 kg  
Weight : 2,400 kg

\*Some units are equipped with a 180° rotating hydraulic dump bed.



WEEKLY  
950\$

MONTHLY  
2850\$

## Wheels dumpers 6 tons

### SPECIFICATIONS

Engine Power : 74 HP  
Load Capacity : 6,000 kg  
Weight : 4,200 kg

\*Some units are equipped with a 180° rotating dump bed.



SEMAINE  
1160\$

MOIS  
3500\$

## Wheels dumpers 9 tons

### SPECIFICATIONS

Engine Power : 74 to 117 HP  
Load Capacity : 9,000 kg  
Weight : 5,000 kg

\*Some units use biodegradable oil.



SEMAINE  
1400\$

MOIS  
4200\$

Rental rates are calculated without fuel.

Transportation is extra.

Daily rental: maximum of 8 hours.

Weekly rental: maximum of 40 hours.

Monthly rental: maximum of 176 hours.

Additional hours are charged on a prorated basis.

\*\*Lowest price displayed\*\*

## Contact us

520 Rivière Street, Cowansville  
J2K 3G6  
(450)266-5000  
vente@pinso.com  
www.pinso.com

## Crawler dumpers 2.5 TM

### SPECIFICATIONS

Engine Power : 46 HP  
Load Capacity : 2,500 to 3,000 kg  
Track Width : 13"  
Weight : 2,200 to 2,500 kg



WEEKLY  
1000\$

MONTHLY  
3000\$

## Crawler dumpers 3.3 TM

### SPECIFICATIONS

Engine Power : 76 HP  
Load Capacity : 3,300 kg  
Track Width : 20"  
Weight : 4,000 kg



WEEKLY  
1300\$

MONTHLY  
3900\$

## Crawler dumpers 4.3 to 5 TM

### SPECIFICATIONS

Engine Power : 99 to 131 HP  
Load Capacity : 4,000 to 5,000 kg  
Track Width : 24"  
Weight : 6,000 to 6,100 kg



WEEKLY  
2000\$

MONTHLY  
6000\$

## Crawler dumpers 6 to 7 TM

### SPECIFICATIONS

Engine Power : 131 to 225 HP  
Load Capacity : 6,000 to 7,000 kg  
Track Width : 24" to 28"  
Weight : 8,000 to 10,500 kg



WEEKLY  
3000\$

MONTHLY  
9000\$

## Crawler dumpers 10 to 11 TM

### SPECIFICATIONS

Engine Power : 250 to 266 HP  
Load Capacity: 10,000 to 11,000 kg  
Track Width : 32"  
Weight : 14,400 to 16,000 kg  
\*Some units use biodegradable oil.



WEEKLY  
4350\$

MONTHLY  
13000\$

## Crawler dumpers 15 TM

### SPECIFICATIONS

Engine Power : 76 HP  
Load Capacity : 3,300 kg  
Track Width : 20"  
Weight : 4,000 kg



WEEKLY  
5350\$

MONTHLY  
16000\$

## 360° Rotating crawler dumpers

## 6 to 7 TM

### SPECIFICATIONS

Engine Power : 131 to 225 HP  
Load Capacity : 6,000 to 7,000 kg  
Track Width : 24" to 28"  
Weight : 8,000 to 10,500 kg



WEEKLY  
3200\$

MONTHLY  
9500\$

## 360° Rotating crawler dumpers

## 7 TM and +

### SPECIFICATIONS

Engine Power : 131 to 225 HP  
Load Capacity : 6,000 to 7,000 kg  
Track Width : 24" to 28"  
Weight : 8,000 to 10,500 kg



WEEKLY  
3500\$

MONTHLY  
12500\$

## 360° Rotating crawler dumpers

### 10 to 11 TM

#### SPECIFICATIONS

Engine Power : 250 to 266 HP

Load Capacity : 10,000 to 11,000 kg

Track Width : 32"

Weight : 14,400 to 16,000 kg



#### Contact us

520 Rivière Street, Cowansville

J2K 3G6

(450)266-5000

vente@pinso.com

www.pinso.com

WEEKLY

5350\$

MONTHLY

16000\$

**Rental rates are calculated without fuel. Transportation is extra.**

Daily rental : maximum of 8 hours.

Weekly rental : maximum of 40 hours.

Monthly rental : maximum of 176 hours.

Additional hours are charged on a prorated basis.